



**港森国际大酒店**  
Gangsen International Hotel

港森国际大酒店  
Gangsen International Hotel

# 交通出行

Transportation



港森国际大酒店距离：

|             |               |
|-------------|---------------|
| 江北国际机场T2航站楼 | 15分钟车程，约8公里；  |
| 江北国际机场T3航站楼 | 20分钟车程，约15公里； |
| 国际国博中心      | 25分钟车程，约16公里； |
| 渝北体育馆       | 20分钟车程，约9公里；  |
| 重庆北站        | 28分钟车程，约20公里； |
| 重庆西站        | 45分钟车程，约35公里  |

Distance from gangsen international hotel:

|  |  |
|--|--|
| Jiangbei international airport T2 terminal | 15 minutes by car, about 8 kilometers;       |
| Jiangbei international airport terminal 3  | 20 minutes by car, about 15 kilometers;      |
| International international expo center    | 25 minutes drive, about 16 kilometers;       |
| Yubei gymnasium                            | takes 20 minutes by car, about 9 kilometers; |
| Chongqing north railway station            | 28 minutes by car, about 20 kilometers;      |
| Chongqing west railway station             | is 45 minutes' drive, about 35 kilometers    |



# 酒店介绍



尊敬的宾客：

您好！感谢您考虑选择港森国际大酒店作为合作酒店。

重庆港森国际大酒店坐落于渝北空港园区，毗邻保税港区、悦来会展中心、距离江北国际机场仅需15分钟车程，交通便利，是商务出行与旅游憩息的理想之选。酒店拥有各具特色、高贵典雅客房227套，床位360余个。房间采用蕴涵巴渝文化元素的现代设计风格，通透时尚，宽敞舒适，将品质生活融入高效便捷的都市生活。“澜湾”西餐厅同时为200人奉上经典的中西美食享受，五个功能完善的多功能会议室满足不同会议及宴会需求，最多可接纳1000人同时用餐。俯瞰空港新城的酒店顶层会所“云端·雅汇”，为高端商务人士提供全程私人化定制的管家服务，用心极致，彰显尊贵。酒店裙楼配以综合健身游泳会所、电影院、KTV、购物中心、生活馆等多种业态，为南来北往的商旅人士营造出丰富多彩、健康温馨的入住体验。

Greetings! Thank you for your consideration in choosing Gangsen International Hotel as your cooperation hotel.

Chongqing Gangsen International Hotel is located in Yubei Airport Park, adjacent to bonded port area, Yulai Convention and Exhibition Center, and it is only 15 minutes' drive from Jiangbei International Airport. Its convenient transportation makes it the ideal choice for business tour, travel and relaxing. The hotel has 227 sets of distinctive and elegant guest rooms with more than 360 beds. The rooms adopt the modern design style containing Bayu culture elements, which is ventilative, fashionable, spacious and comfortable integrating quality life into efficient and convenient urban life. "LAN Wan" western restaurant can serve classic Chinese and western food to 200 people simultaneously. Its five multi-functional meeting rooms can meet the needs of different conferences and banquets. It can accommodate up to 1000 people at the same time. It can also overlook the top-floor clubhouse "Yunduan Yahui" of the airport new city. It can provide personalized and customized butler services for high-end business people through its extreme considerateness so as to highlight the nobleness. The skirt building of the hotel is equipped with an integrated fitness and swimming club, cinema, KTV, shopping center, life house and other facilities, which can create a colorful, healthy and cozy living experience for business travelers from all directions.





## “琉璃时光”大堂吧

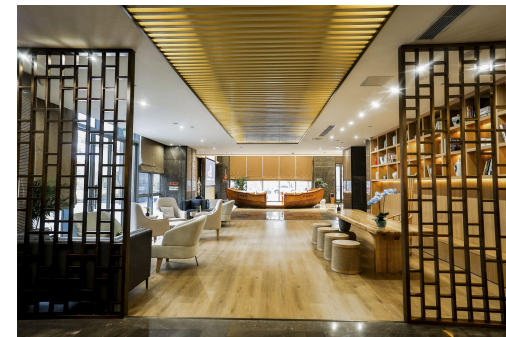
"Coloured glaze time" lobby bar

大堂吧 (营业时间: 9:00-23:00)

Lobby bar (business hours: 9:00-23:00)

位于酒店一层大厅的大堂吧是您休闲的首选之处, 提供各种咖啡、酒水和特色饮品。

Located in the lobby on the first floor of the hotel, the lobby bar is your first choice for leisure, offering a variety of coffee, drinks and specialty drinks.





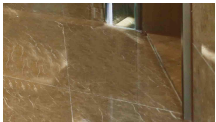
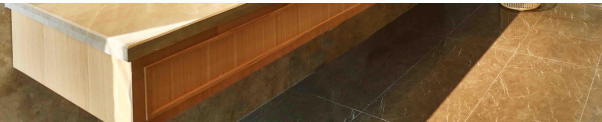
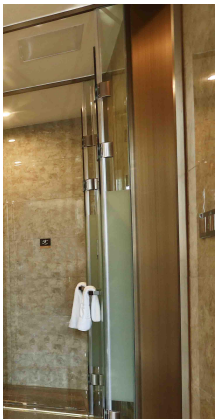
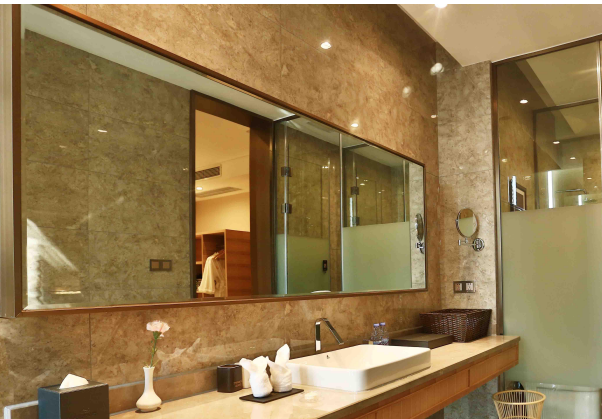
# 客房

Guest Room

酒店拥有各具特色、高贵典雅客房227套，床位360余个.房间采用蕴涵巴渝文化元素的现代设计风格，通透时尚，宽敞舒适，将品质生活融入高效便捷的都市生活。

The hotel has 227 sets of distinctive and elegant guest rooms with more than 360 beds. The rooms adopt the modern design style containing bayu culture elements, transparent, fashionable, spacious and comfortable, integrating quality life into efficient and convenient urban life.

| 房间类型    | 数量  | 房间面积             |
|---------|-----|------------------|
| 豪华单间    | 36间 | 40m <sup>2</sup> |
| 豪华标间    | 90间 | 40m <sup>2</sup> |
| 商务大床房   | 13间 | 45m <sup>2</sup> |
| 麻将房     | 5间  | 45m <sup>2</sup> |
| 行政单间    | 20间 | 42m <sup>2</sup> |
| 行政标间    | 50间 | 42m <sup>2</sup> |
| 行政大床房   | 10间 | 69m <sup>2</sup> |
| 行政商务大床房 | 2间  | 69m <sup>2</sup> |
| 行政商套    | 1间  | 72m <sup>2</sup> |





## 豪华单间

Deluxe single rooms

豪华单间，高贵典雅，令居住其中成为美的享受，让商务劳顿烟消云散，  
使您尽享都市风情。

Luxurious single room, noble and elegant make living among  
them become the beauty to enjoy, let the business fatigue vanish  
into thin air, make you enjoy urban style.





## 豪华标间

Luxury standard rooms



豪华标间，房间采用蕴涵巴渝文化元素的现代设计风格，通透时尚，宽敞舒适，将品质生活融入高效便捷的都市生活。

Luxury standard rooms, rooms contain bayu cultural elements of modern design style, transparent fashion, spacious and comfortable, quality of life into efficient and convenient urban life.





## 行政单间

Executive single room

行政单间，精致瑰丽，舒适典雅，让您尽情享受个人空间。

Executive single room, exquisite and magnificent, comfortable and elegant, let you enjoy your personal space.





## 行政标间

Executive standard rooms



行政标间，温馨典雅让您既有家的感觉，又适合做商务洽谈。

Executive standard rooms, warm and elegant let you have the feeling of home, and suitable for business negotiations.

# VIP1\VIP2V\VIP3\多媒体厅

VIP1\VIP2V\VIP3\ multimedia hall



VIP1面积210平米，可容纳宴会110人、课桌式120人、剧院式180人、圆桌12桌

VIP2面积100平米，可容纳宴会50人、课桌式50人、剧院式80人、圆桌6桌

VIP1+VIP2面积310平米，可容纳宴会160人、课桌式200人、剧院式250人圆桌18桌

VIP3面积170平米，可容纳宴会110人、课桌式110人、剧院式180人、圆桌10桌

多媒体厅面积80平米，可容纳宴会50人、课桌式50人、剧院式80人、圆桌6桌

配备先进的播音、演示、幻灯等设备，能满足多样化的会议要求，为一流的会议、演讲、产品展示等会务活动提供可靠保证。

VIP1 covers an area of 210 square meters and can accommodate 110 people for banquet, 120 people for desk type, 180 people for theater type and 12 tables for round table

VIP2 covers an area of 100 square meters and can accommodate 50 people for banquet, 50 people for desk type, 80 people for theater type and 6 tables for round table

VIP1+VIP2 covers an area of 310 square meters and can accommodate 160 people for banquet, 200 people for desk type, and 18 tables for theatre type 250 people

VIP3, with an area of 170 square meters, can accommodate 110 people for banquet, 110 people for desk type, 180 people for theater type and 10 tables for round table

The multimedia hall covers an area of 80 square meters, which can accommodate 50 people for banquet, 50 people for desk type, 80 people for theater type and 6 tables for round table

Equipped with advanced broadcasting, demonstration, slide and other equipment, can meet the requirements of a variety of meetings, for the first-class meeting, speech, product display and other activities to provide a reliable guarantee.



# 宴会厅

The banquet hall



宴会厅面积600平米，可容纳宴会400人、课桌式400人、剧院式500人。配备LED、投影幕布，音响设备，追光灯等专业硬件，可满足不同要求的客户需求。

The banquet hall covers an area of 600 square meters and can accommodate 400 banquet guests, 300 desk guests and 500 theatre guests. Equipped with LED, projection screen, audio equipment, lighting and other professional hardware, can meet different requirements of customers.



## “澜湾”西餐厅

"LAN WAN" western restaurant



“澜湾”西餐厅（营业时间：06:30--21:00）  
提供正宗西式扒餐、中餐零餐、商务套餐及品种丰富的自助晚餐，最多可容纳200人同时用餐。

"LAN WAN" western restaurant (business hours: 06:30--21:00)  
Provide authentic western-style steak, Chinese zero meal, business set meal and a variety of buffet dinner, can accommodate up to 200 people at the same time.



## 中餐包房

Chinese private room

中餐包房 (营业时间: 11:30-14:30 17:30--21:00)

川粤菜系为主, 特聘国际五星级厨师团队主理

Lunch room (business hours: 11:30-14:30 17:30--21:00)

Sichuan and guangdong cuisine is mainly served by international five-star chef team



# 云端雅汇

Cloud DuanYa remit



大隐隐于市的21楼云端雅汇，私密厨房，格调高雅，布局匠心独具，视野开阔，巴山蜀水尽收眼底，是私人聚餐，棋牌、KTV的理想之地。

Big faint in the city's 21st floor cloud duanya hui, elegant style, layout ingenuity alone, broad vision, bashanshu river panoramic view, It is an ideal place for private dinner, chess and KTV.



## 吃在港森

Eat in Hong Kong



非鲁班之墨斗云梯，却是柴米油盐间的精湛技艺，曾在涉外酒店掌勺的港森厨师团队，始终饱含热忱与敬意，以沉淀之心对抗枯燥，寻求蜕变，十年树木，百年树人，任岁月打磨，寻得耀眼光辉。

Not lu ban's modou ladder, but it is the superb skills between firewood, rice, oil and salt, have been in the foreign hotel chef gang sen team, always full of enthusiasm and respect, to precipitation of the heart against boring, looking for change, ten years of trees, a hundred years of tree, any years of grinding, find dazzling brilliance.

## 洗衣服务

Medical services



酒店提供自助洗衣服务和送洗服务，给您工作生活助力。

The hotel provides self-service laundry service and laundry service to help you live and work.





## 健身中心 Fitness center



健身中心位于三楼，配备国际一流的健身器材。长25米，宽13米的室内恒温游泳池经过专业的消毒及过滤，可放心畅游。

The fitness center is located on the third floor, equipped with world-class fitness equipment. The indoor heated swimming pool is 25 meters long and 13 meters wide.



## 便捷购物

Fitness center



出门即是面积达6000平米永乐惠超市，琳琅满目的商品满足您不同的购物需求。

Go out is an area of 6000 square meters yonglehui supermarket, full of goods to meet your different shopping needs.



## 医疗服务

Medical services



近在咫尺的重庆临港医院总建筑面积4251.66m<sup>2</sup>。拥有床位90张，设内科、外科、妇产科、儿科、口腔科及中西医结合科，设置手术室。同时，各大药房星罗棋布，解除您生活的后顾之忧。

Near at hand, chongqing lingang hospital has a total construction area of 4,251.66 m<sup>2</sup>. It has 90 beds, including internal medicine, surgery, obstetrics and gynecology, pediatrics, stomatology and integrated traditional Chinese and western medicine, and operating room. At the same time, the major pharmacies spread all over the place, remove your worries about life.



## 周边美食

The surrounding food



四库全牛火锅



藕王汤 、 小郡肝



义门白家

四库全牛火锅，义门白家，藕王汤，小郡肝，满足您不同的味蕾。

Siku beef hot pot, yimen white home, lotus root soup, small county liver, to meet your different taste buds.

# 共享汽车

car-sharing



智能时代的到来，共享汽车助您说走就走

With the advent of the intelligent age, sharing cars can help you walk away



# 康体娱乐

The surrounding food



漫步苍翠欲滴的观河体育文化公园，寻找儿时的乐趣，工作亦如此，生活亦如然。

Stroll through the verdant river sports and culture park to find the fun of childhood, as well as work and life.

## 重庆港森国际大酒店交通路线

### 重庆江北机场：

1、T2航站楼：轨道交通3号线（鱼洞方向），碧津站下换乘3号线延伸线举人坝方向观月路下车往长安工业方向直行740米步行10分钟左右到达酒店。

2、T3航站楼：轨道交通10号线（王家庄方向），江北机场T2航站楼换乘3号线碧津方向，碧津站下换乘3号线延伸线举人坝方向观月路下，长安工业方向直行740米步行10分钟左右到达酒店。

### 重庆北站：

#### 1、南广场：

线路一：重庆北站南广场6号口，轨道交通3号线碧津站下换乘3号线延伸线举人坝方向观月路下车往长安工业方向直行740米步行10分钟左右到达酒店。

驾车线路：导航至重庆港森国际大酒店，全程23公里驾车需要29分钟到达酒店

打车费用：40元左右

2、北广场：北站北广场2号口，轨道交通10号线王家庄方向江北机场T2航站楼下，碧津站下换乘3号线延伸线举人坝方向观月路下，长安工业方向直行740米步行10分钟左右到达酒店。

### 重庆西站：

机场快线K06路，江北机场T3航站楼下，换乘轨道交通10号线王家庄方向，T2航站楼下换乘三号线鱼洞方向，碧津下碧津站下换乘3号线延伸线举人坝方向观月路下，长安工业方向直行740米步行10分钟左右到达酒店。

自驾路线：导航至重庆港森国际大酒店即可

酒店到两江小学交通线路如下：

一、自驾路线：导航至重庆两江小学，全程5.1公里，大约10分钟左右到达目的地

二、公交路线观月南路口站乘坐691路公交车至碧湖路渝北中学站下车，步行5分钟到达目的地

打车费用：13元左右